



TLB Loader/Landscaper Tractors B21



FEATURES



TRANSPORTING THIS MEGA-WORKER IS EASY

Since the B21 loader with backhoe weighs only 3836 lbs* (1740kg), it's easily transported by a ¾ ton pick-up truck and a trailer rated 10,000 lbs. GVWR, which requires only a C Class license in most states.

(*Weights may vary due to options available.)

ROPS/FOPS

The 4-post Roll-Over Protective Structure and the Falling Object Protective Structure come standard, to help keep you safe from any potential risks. Front and rear work lights optional.



HST (HYDROSTATIC TRANSMISSION)

The tractor's superb maneuverability comes from our hydrostatic transmission and 4WD system. A single pedal controls both speed and direction changes quickly and without shifting or clutching. This is especially helpful when working in tight spaces.

INTEGRATED MAIN FRAME

Using a pillow-block supported integral main frame that has been reinforced, it absorbs twisting loads during backhoe operation and will not transmit flex to the tractor chassis. This makes the structural integrity of the B21 uncompromisingly sound, giving you a firmer ride and a structurally solid vehicle that will do its job and do it with ease.



ENGINE

The B21 has a 21 horsepower (gross) E-TVCS diesel engine, which meets EPA emissions regulations and also uses special internal balancers for low-noise levels and low vibration. The powerful and tenacious engine starts quickly and is environmentally friendly as well.

HARD-NOSE SLANTED HOOD AND FRONT GUARD

Gain an unobstructed view of what lies ahead, thanks to the hard-nose slanted hood. The loader bucket is easy to see in the down position and the front-grill guard helps to protect the hood and engine components from any type of impact.





TLB *Loader/Landscaper Tractors* B21



FEATURES



CONCEALED MUFFLER WITH SPARK ARRESTER

No large, obstructing exhaust stack to impair your forward vision. We've tucked it away, so all you see is the work area ahead of you. In addition, a spark arrester is standard allowing for work in areas requiring this feature.

4WD

Standard with this feature-packed tractor is 4WD, giving you greater pulling power as well as less slippage. This provides you with virtually unstoppable performance even in difficult conditions and varying terrain. This feature is especially helpful during loader operations.



JOYSTICK CONTROL

Using only the single joystick lever, you easily control multiple functions such as raising or lowering the boom, bucket dump, bucket rollback, or even combining the functions to increase productivity. Also, we've designed into our performance matched system a regenerative circuit that allows for faster dump cycles.

MAXIMUM ROLLBACK DUMP ANGLES

Rotation achieved from the 4-bar linkage system reaches 44° of rollback and 45° of dump angle. These angles mean you can fill and dump buckets easier and faster, maximizing your productivity.



FRONT LOADER

With a lifting capacity of 926 lbs. (420kg) and a maximum height of 7.4 feet (2255mm) to the pivot pins, the front loader can tackle just about any job with ease.

METAL BUSHINGS

Replaceable bushings are incorporated into the design and are strategically located at the pivot points to allow you to economically replace and maintain a like-new fit.



on my mac



FEATURES

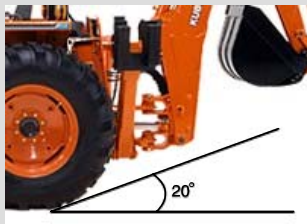


BACKHOE

With a digging depth of 7.5 feet (2 foot flat bottom), it's able to handle an expanded variety of jobs efficiently.

ONE TOUCH REVERSE HIGH-BACK SEAT

The B21 offers a high-back deluxe seat that provides daylong comfort and reduced operator fatigue. It also adjusts forward or backward with just a touch and can be quickly reversed for backhoe operation.

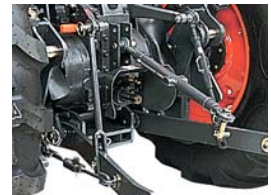


20° ANGLE OF DEPARTURE

High ground clearance provides a generous angle of departure. This allows the B21 to load quickly and easily onto a trailer and will help prevent you from damaging curbs while moving from job to job.

PTO

The live, continuous-running, 540-rpm PTO expands the use of this tractor to include rear mounted PTO driven implements such as rotary tillers, post hole diggers, snow blowers and rear mount mowers, just to name a few.



QUICK-MOUNT ATTACH/DETACH

Featuring a four-point mount, quick attach system, the backhoe can be removed and installed easily.

CAT I, 3-POINT HITCH

The lifting force of the CAT I, 3-point hitch is 2315 lbs (1050 kg) 24 inches behind the lift points, allowing you to use a wide variety of implements. The responsive position control lever ensures accurate and smooth 3-point positioning and includes cushion relief protection.

