



TLB Loader/Landscaper Tractors L48



FEATURES



TRANSPORTING THIS MEGA-WORKER IS EASY

Since the L48 loader with backhoe weighs approximately 7750 lbs*. (3520 kg). It's easily transported by a 3/4 ton pick-up truck and a trailer rated 10000 lbs. GVWR, which requires only a C Class license in most states. (*Weights may vary due to options available.)

ROPS/FOPS AND COMBINATION HEADLIGHTS/WORK LIGHTS

The 4-post Roll-Over Protective Structure and the Falling Object Protective Structure come standard, to help keep you safe from any potential risks. Plus, your headlights are mounted high, allowing for a bigger area of night coverage. (The rear work lights are optional as displayed.)



HEAVY-DUTY REAR AXLE

The heavy-duty rear axle incorporates planetary final drives to handle heavy torque loads, and uses multiple wet-disc brakes for extended life and smooth stopping performance.

FEATHER STEP™ HST

The "Feather Step" HST ease of operation is due to the hydraulic servo that gives you improved control by reducing the amount of pedal pressure needed to depress the HST pedal. Forward and reverse movements are easy when using the loader. And, regardless of the load, you will not experience sudden pedal pressure changes. Operation is smooth even when making sudden stops or directional changes as well.



INTEGRATED MAIN FRAME

Using a pillow-block supported integral main frame that has been reinforced, it absorbs twisting loads during backhoe operation and will not transmit flex to the tractor chassis. This makes the structural integrity of the L48 uncompromisingly sound, giving you a firmer ride and a structurally solid vehicle that will do its job and do it with ease.

Smile
on my mac

**FEATURES****ENGINE**

The L48 has a 48 horsepower (gross) E-TVCS diesel engine which meets EPA emissions regulations and also uses special internal balancers for low-noise levels and low vibration. The powerful and tenacious engine starts quickly and is environmentally friendly as well.

HARD-NOSE SLANTED HOOD AND FRONT GUARD

Gain an unobstructed view of what lies ahead, thanks to the hard-nose slanted hood. The loader bucket is easy to see in the down position and the front-grill guard helps to protect the hood and engine components from any type of impact.

**CONCEALED MUFFLER WITH SPARK ARRESTER**

No large, obstructing exhaust stack to impair your forward vision. We've tucked it away, so all you see is the work area ahead of you. In addition, a spark arrester is standard allowing for work in areas requiring this feature.

4WD

Standard with this feature-packed tractor is 4WD, giving you greater pulling power as well as less slippage. This provides you with virtually unstoppable performance even in difficult conditions and varying terrain. This feature is especially helpful during loader operations.

**JOYSTICK CONTROL**

Using only the single joystick lever, you easily control multiple functions such as raising or lowering the boom, bucket dump, bucket rollback, or even combining the functions to increase productivity. Also, we've designed into our performance matched system a regenerative circuit that allows for faster dump cycles.



FEATURES

AUTOMATIC HYDRAULIC SELF-LEVELING SYSTEM

An exclusive feature for this class of tractor. By simply moving the joystick to the "Up" or "Down" position, the bucket angle is automatically kept the same at any angle as the boom is raised or lowered, thanks to the self-leveling valve. This minimizes spillage prior to dumping and makes the loader easier to operate. It's very useful especially when using pallet forks.



MAXIMUM ROLLBACK/DUMP ANGLES

Rotation achieved from the 4-bar linkage system reaches 45 degrees of rollback and dump angles. These angles mean you can fill and dump buckets full of material easier and faster, maximizing productivity.



FRONT LOADER

With an enormous lifting capacity of 2540lbs. (1150kg) and a maximum height of 9.7 feet (2950mm) to the pivot pins, the front loader can tackle just about any job with ease.

METAL BUSHING

Replaceable bushings are incorporated into the design and are strategically located at the pivot points to allow you to economically replace and maintain a like-new fit.



SKID STEER-TYPE QUICK HITCH

This cost-effective option is offered to give you the convenience of rapid attachment change-over using basic tools you may already own.



FEATURES

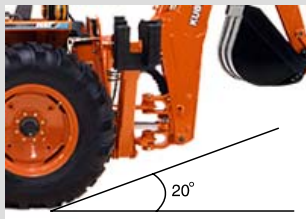


BACKHOE

With a digging depth of 11.1 feet (2 ft. flat bottom), it's able to handle an expanded variety of jobs efficiently. A dedicated pump for the boom swing makes for smooth, precise, and controlled operation. Still, more versatility is provided by the 4-point backhoe quick-mount system which expands the L48's capabilities and allows you to maximize the return on your investment.

REVERSIBLE SEAT

The seat reverses on the spot, so you can operate the backhoe with simplicity. A convenient walk-through platform eliminates climbing over the seat or dismounting the tractor. Now, just reverse the seat, step in, and you're ready to work. It's that easy. Plus, the seat is designed to rotate 15 degrees to the right, providing the best position when using rear implements such as our Top-N-Tilt System with a box scraper.



20° ANGLE OF DEPARTURE

High ground clearance provides a generous angle of departure. This allows the L48 to load quickly and easily onto a trailer and will help prevent you from damaging curbs while moving from job to job.

STARTER SWITCH

The new location of the starter switch makes it easy to start the engine while in the backhoe operating position. No need to reach around and fumble for the standard switch either. We've put it right next to you.



MULTIPLE PUMP SYSTEM

A new feature on the L48 is the swing-raise-lower functions can be performed simultaneously, thanks to the dedicated swing pump. Precise and smooth positioning is easily accomplished using the inching spool.



FEATURES



PTO

The live, continuous-running, 540-rpm PTO expands the use of this tractor to include rear mounted PTO driven implements such as rotary tillers, post hole diggers, snow blowers and rear mount mowers, just to name a few.

QUICK-MOUNT ATTACH/DETACH

Featuring a four-point mount, quick attach system, the backhoe can be removed and installed easily.



DRAW BAR (optional flat-bar type)

This allows you to attach a trailer to the L48 to shuttle cargo to and from work sites.

CATEGORY I, 3-POINT HITCH

The lifting force of the CAT. I, 3-point hitch is 3,310lbs (1,500kg) 24 inches behind the lift points, allowing you to use a wide variety of implements. The responsive position control lever ensures accurate and smooth 3-point positioning and includes cushion relief protection.



Smile
on my mac